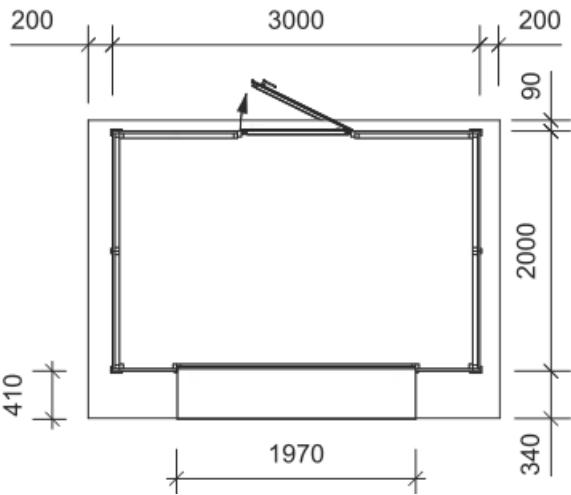
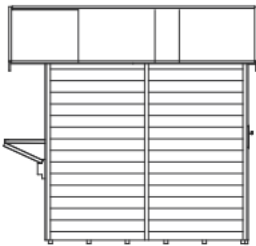
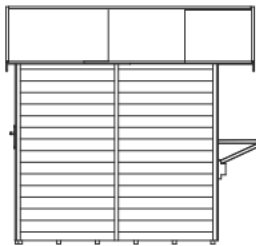
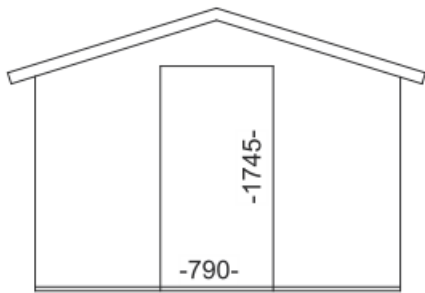
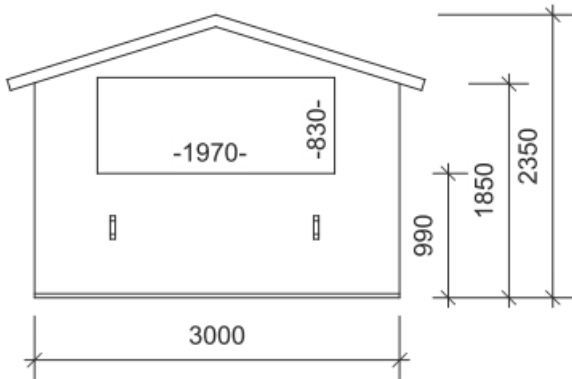
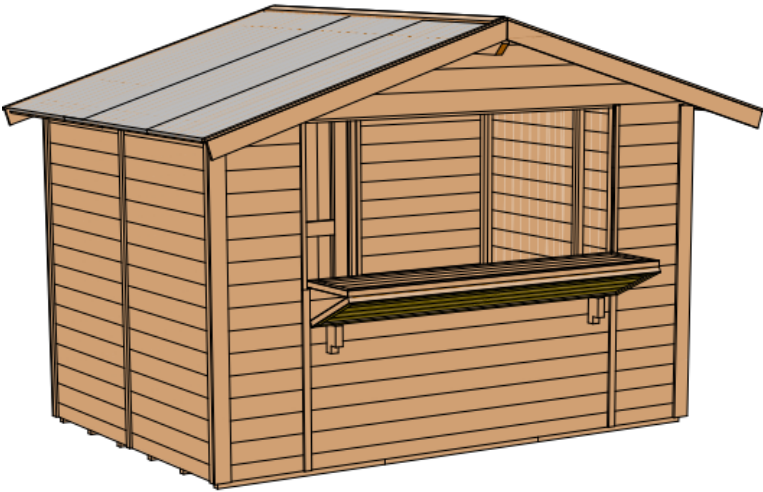




SCHEDA TECNICA CHIOSCO 3020

Art. n. GP/CHIOSCO3020



									⊗	Ⓨ	Ⓩ	kg
									120cm	205cm	93 cm	428
Pavilon 302019mm	Art. N. 5965280	Ean.N. 5999553063912	6 m ²	13,2 m ³	8,63m ²	4						

